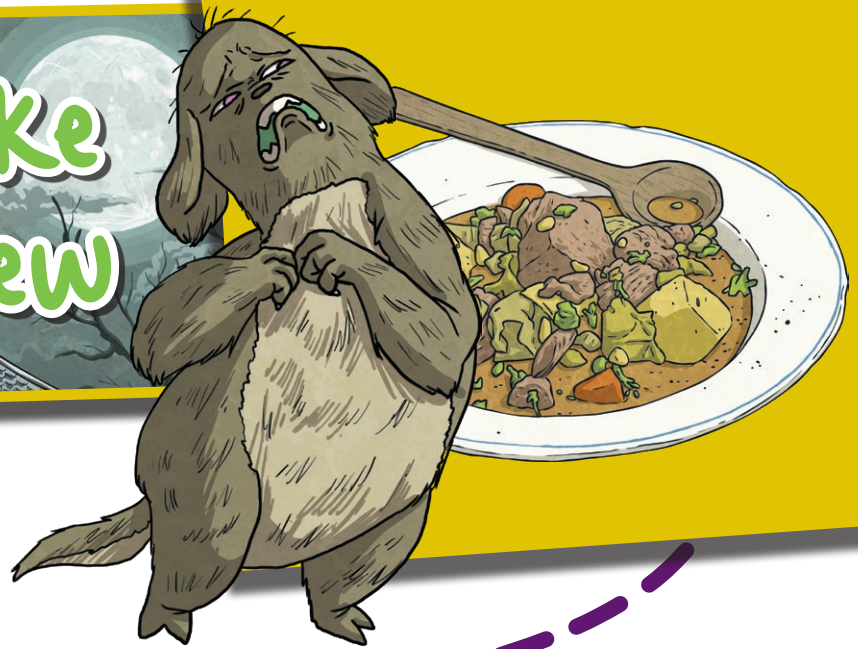


How to Make Monster Stew



Ingredients:

- 3 pickled onions
- 8 glugs of green slime
- 4 purple flowers (thorns on!)
- A pinch of pepper
- A handful of blargonberries

Method:

- 1 First, mash the pickled onions and stir into the green slime on a low heat.
- 2 Next, remove the petals from the flowers and add those. Set aside the thorny stems.
- 3 Now, throw in a handful of blargonberries and raise the heat until the stew begins to bubble.
- 4 Finally, add a pinch of pepper and serve with the thorny stems as a garnish.

WARNING: NOT FOR HUMAN CONSUMPTION



Questions

1. What adjectives did the writer use to describe the stew?

delicious, tasty, perfect

delicious, sensational, perfect

delightful, sensational, tasty

2. What ingredient do you need 8 of?

pickled onions

glugs of green slime

purple flowers

3. Why do you think the writer has written thorns on! in brackets?

4. What word could the writer use instead of mash?

stir

sieve

squash

5. Why is a 'glug' and a 'handful' not very useful for measuring?

6. Why has the writer written WARNING in capital letters?

7. What ingredients would you add to Monster Stew?

Questions - Answers

1. What adjectives did the writer use to describe the stew?

- delicious, tasty, perfect
- delicious, sensational, perfect
- delightful, sensational, tasty

2. What ingredient do you need 8 of?

- pickled onions
- glugs of green slime
- purple flowers

3. Why do you think the writer has written thorns on! in brackets?

It is extra information

4. What word could the writer use instead of mash?

- stir
- sieve
- squash

5. Why is a 'glug' and a 'handful' not very useful for measuring?

They are not exact measurements

6. Why has the writer written WARNING in capital letters?

To show that it is important and make it stand out

7. What ingredients would you add to Monster Stew?

Any appropriate 'gross' ingredients

***Disclaimer:** We hope you find the information on our website and resources useful. As far as possible, the contents of this resource are reflective of current professional research. However, please be aware that every child is different and information can quickly become out of date. The information given here is intended for general guidance purposes only and may not apply to your specific situation.