

What are plants and how do they work?



All plants need light, water, air, nutrients, and space to grow.

Plant structure

Plants can grow inside and outside.

Flower:

- attracts bees
- used in reproduction
- have male and female parts.

Stem:

- supports the plant and holds the leaves towards the light
- transports water and nutrients from the roots to the rest of the plant in vessels.

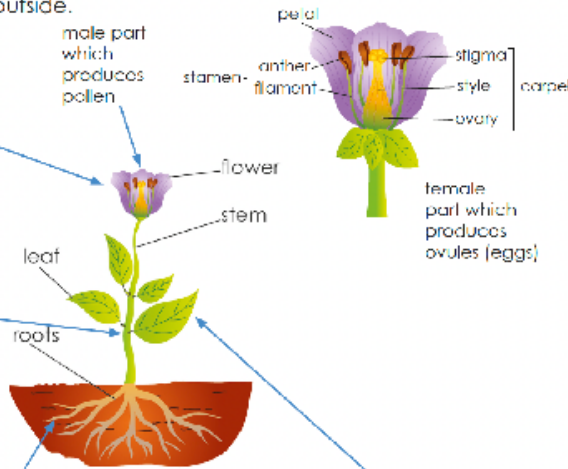
Roots:

- anchor the plant, stopping it from blowing away
- covered in tiny hairs which help absorb water and nutrients from the soil
- different plants have different roots depending on the soil in which they grow.

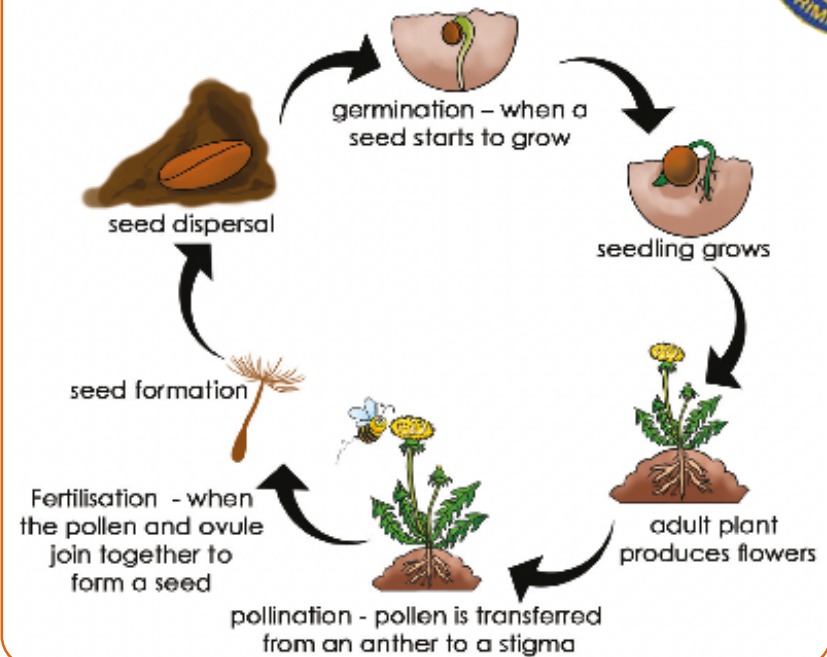
Leaves:

- make food for the plant using sunlight
- this process is called photosynthesis.

Living things that make their own food are called producers.



Lifecycle of a plant



Seed dispersal

Seeds are dispersed away (spread) from the parent plant so they have space to grow.

Seeds are dispersed by:

- wind
- water
- explosion
- carried by animals
- eaten by animals
- drop and roll (drop from a tree and roll away)

fertilisation	The joining together of an ovule and pollen.	photosynthesis	The process by which a plant makes its own food.
flower	The reproductive part of a plant.	pollen	The male part of a plant.
germination	When a seed starts to grow.	pollination	The moving of pollen from one plant to another for fertilisation.
leaf (plural: leaves)	The parts attached to the stem of a plant and where food is produced.	producer	Living things that make their own food; plants are producers.
life cycle	The stages a living thing goes through during its life.	roots	The parts that anchor a plant into the ground, and that take up water and nutrients from the soil.
nutrients	Substances that living things need so that they can stay healthy and grow.	seed dispersal	The moving of seeds away from the parent plant.
ovule	An egg, or female part of the plant.	stem	The main body of a plant, which supports the plant and holds the leaves up to the light.

What are plants and how do they work?



All plants need light, water, air, nutrients, and [redacted].

Plant structure

Plants can grow inside and outside.

- attracts bees
- used in reproduction
- have male and female parts.

Stem:

- supports the plant and holds the leaves towards the light

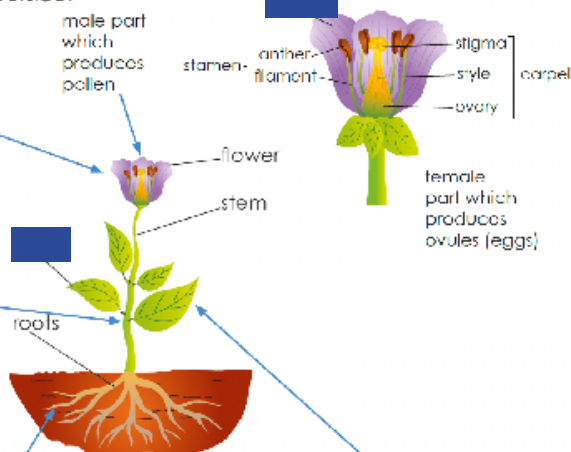
Roots:

- covered in tiny hairs which help absorb water and nutrients from the soil
- different plants have different roots depending on the soil in which they grow.

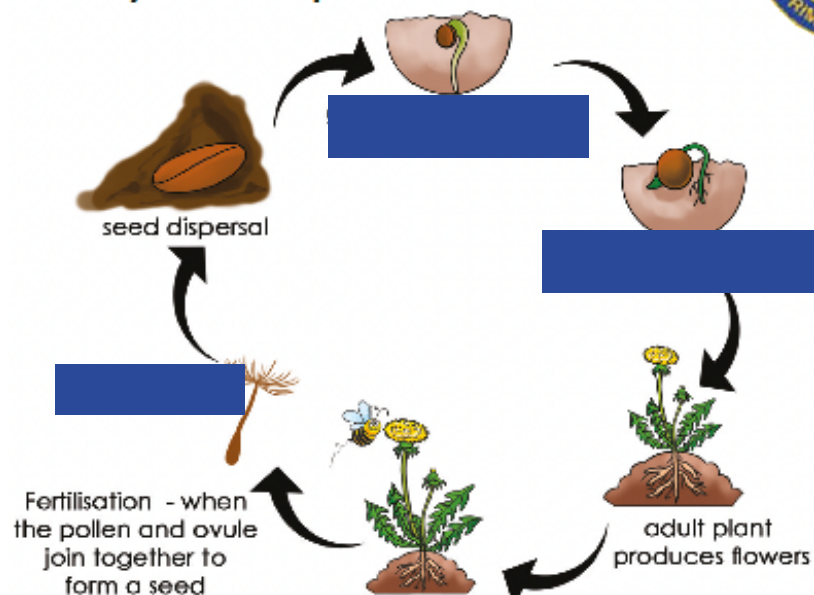
Leaves:

- make food for the plant using sunlight
- this process is called photosynthesis.

Living things that make their own food are called producers.



Lifecycle of a plant



Seed dispersal

Seeds are dispersed away (spread) from the parent plant so they have space to grow.

Seeds are dispersed by:

- carried by animals
- eaten by animals
- drop and roll (drop from a tree and roll away)

fertilisation	The joining together of an ovule and pollen.	photosynthesis	The process by which a plant makes its own food.
flower	The reproductive part of a plant.	[redacted]	The male part of a plant.
[redacted]	When a seed starts to grow.	pollination	The moving of pollen from one plant to another for fertilisation.
leaf (plural: leaves)	[redacted]	producer	Living things that make their own food; plants are producers.
life cycle	The stages a living thing goes through during its life.	roots	The parts that anchor a plant into the ground, and that take up water and nutrients from the soil.
[redacted]	Substances that living things need so that they can stay healthy and grow.	[redacted]	The moving of seeds away from the parent plant.
ovule	[redacted]	stem	[redacted]